

# PREMIER COLLECTION

*At Seaside*



Nestled between the beautiful Barnegat Bay and mighty Atlantic Ocean, just a few minutes walk to the boardwalk with its bounty of amusements, dining and the amazing white sandy beaches of Seaside Heights, New Jersey; Premier Collection at Seaside offers four gorgeous 3 bedroom, 2 1/2 bathroom, luxury townhomes. With more than 1,600 square feet of living area, one car garage and driveway, 9 foot ceilings, designer kitchen cabinets with granite tops, GE stainless steel appliances and much, much more.

---

# PREMIER COLLECTION

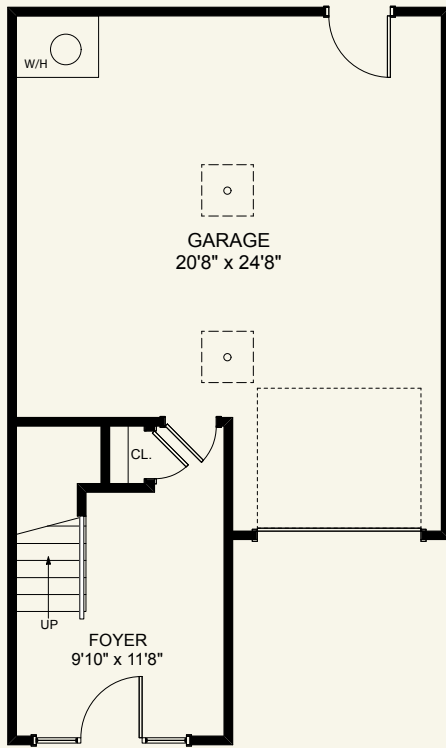
---

## *At Seaside*

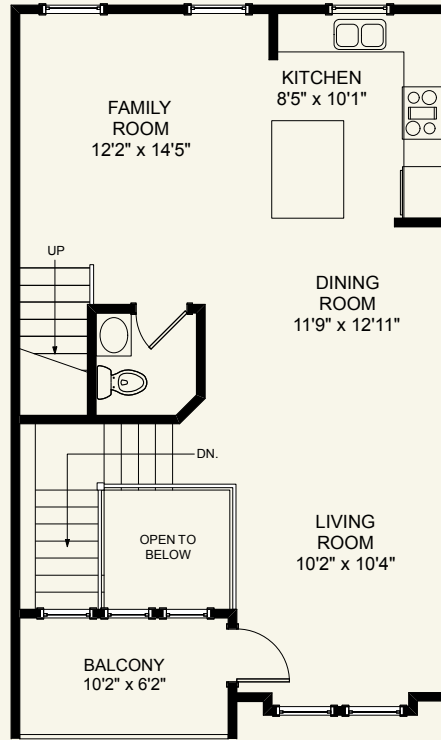
### Standard Features



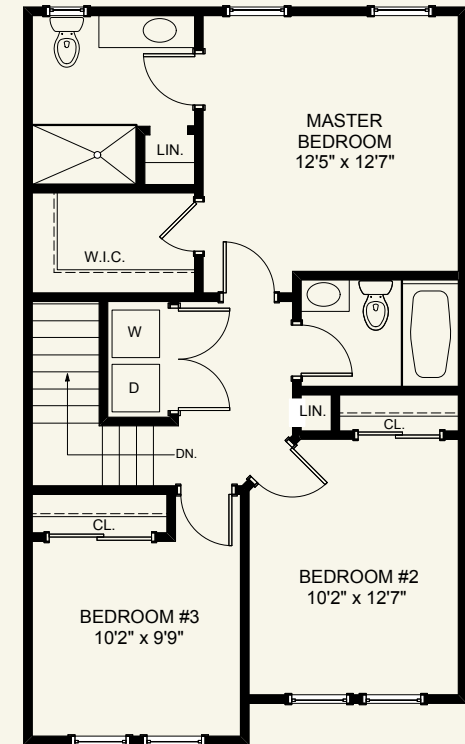
- One Car Garage & Off-Street Driveway Parking
- Maintenance Free Vinyl Tilt Wash, High Impact Glass Windows with Screens
- Garage Level Storage Area
- TJI Silent Floor System
- 30 Year Dimensional Roof Shingles
- 9 Foot Ceilings in all Living Areas
- Ceramic Tile or Hardwood Floors in Foyer, Kitchen, Family Room, Living Room, Dining Room & Laundry
- Designer Kitchen Includes:
  - 42" Oak or Maple Raised Panel Kitchen Cabinets with Crown Molding
  - Kitchen Island Cabinet
  - Granite Countertops
  - GE Stainless Steel Range with Self Cleaning Oven
  - GE Stainless Steel Microwave
  - GE Stainless Steel Automatic Dishwasher
  - Double Bowl Stainless Steel Sink
- Choice of 6 Panel Colonist or 2 Panel Classique Interior Doors
- Ceramic Tile floors in all Bathroom & Tub & Shower Areas
- 150 Amp Electrical Service
- Gas Fired Forced Hot Air Heat
- Central Air Conditioning
- Attic Stairs on Second Floor
- 5 1/2" Base & 3 1/2" Casing Moldings
- Laundry with Hookups for Washer & Dryer
- Luxurious Wall to Wall Carpeting with 1/2" Padding
- Pre-wiring for Telephone & Cable Television
- Direct Wired Smoke & CO Detectors with Battery Backup
- Exterior Weatherproof Electrical Outlets
- Copper Electrical Wiring
- R-13 Sidewall Insulation (3 1/2")
- R-30 Attic Insulation (9 1/2")
- City Sewer
- City Water
- Natural Gas
- RWC - 10 Year New Home Warranty Program



*Ground Level*



*Main Level*



*Upper Level*

## *Floor Plans*



### **For more information**

Call 732-905-6666 • Email: [PremierCollectionCustomHomes@yahoo.com](mailto:PremierCollectionCustomHomes@yahoo.com) or visit our  
Website at: [www.PremierCollectionCustomHomes.com](http://www.PremierCollectionCustomHomes.com)

### **Directions**

#### From Garden State Parkway North and South

Take Garden State Parkway to exit 82 Rt. 37 E. (Seaside Heights/Island Beach State Park). Proceed on Rt. 37 E. for 6.8 miles. Merge onto Rt. 35 N toward Seaside Heights/Pt. Pleasant. for 0.4 miles. Take ramp toward Seaside Heights. Keep right at the fork to go onto Bay Blvd. for 0.1 miles. Turn left onto Hamilton Ave. 235 Hamilton Ave. is on the right. (GPS address is 235 Hamilton Ave., Seaside Heights, NJ 08751).



*Site Plan*

